

# Regional and global perspectives on climate change and health: focusing on solutions

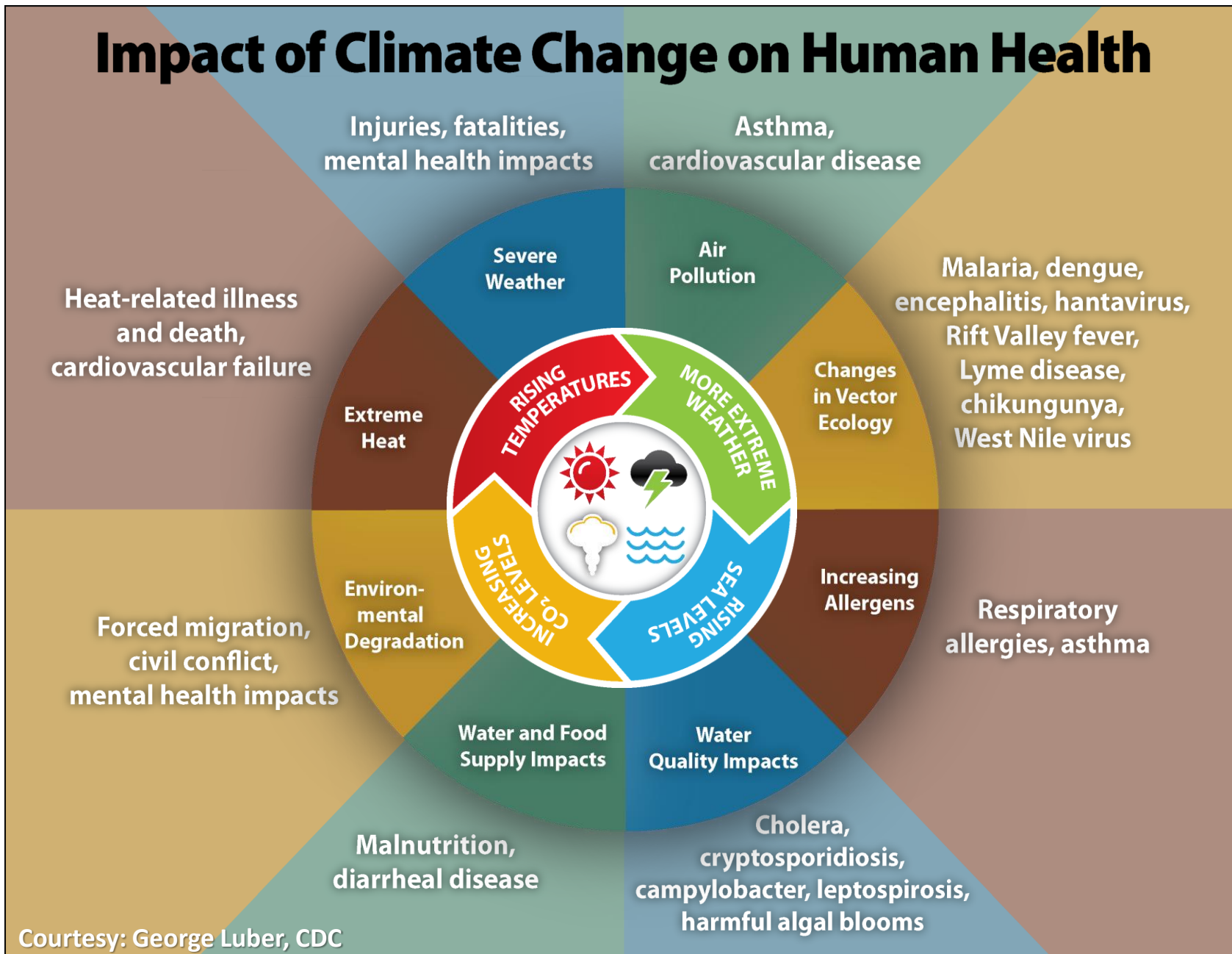
---

Introduction to the global project

Robin Fears

Director, Biosciences Programme, EASAC and IAP project coordinator

# Impact of Climate Change on Human Health



Courtesy: George Luber, CDC

# IAP project on climate change and health

November 2019 – December 2022

<https://www.interacademies.org/project/climate-change-and-health>

Led by the German National Academy of Sciences, Leopoldina, funded by BMBF, IAP launched an inter-regional project on climate change adaptation and mitigation strategies that bring health benefits.



This project will produce three regional reports for Africa, Asia and the Americas (the [regional report for Europe is already available](#)) that will provide a snapshot of the current situation and present science-based recommendations for each region.

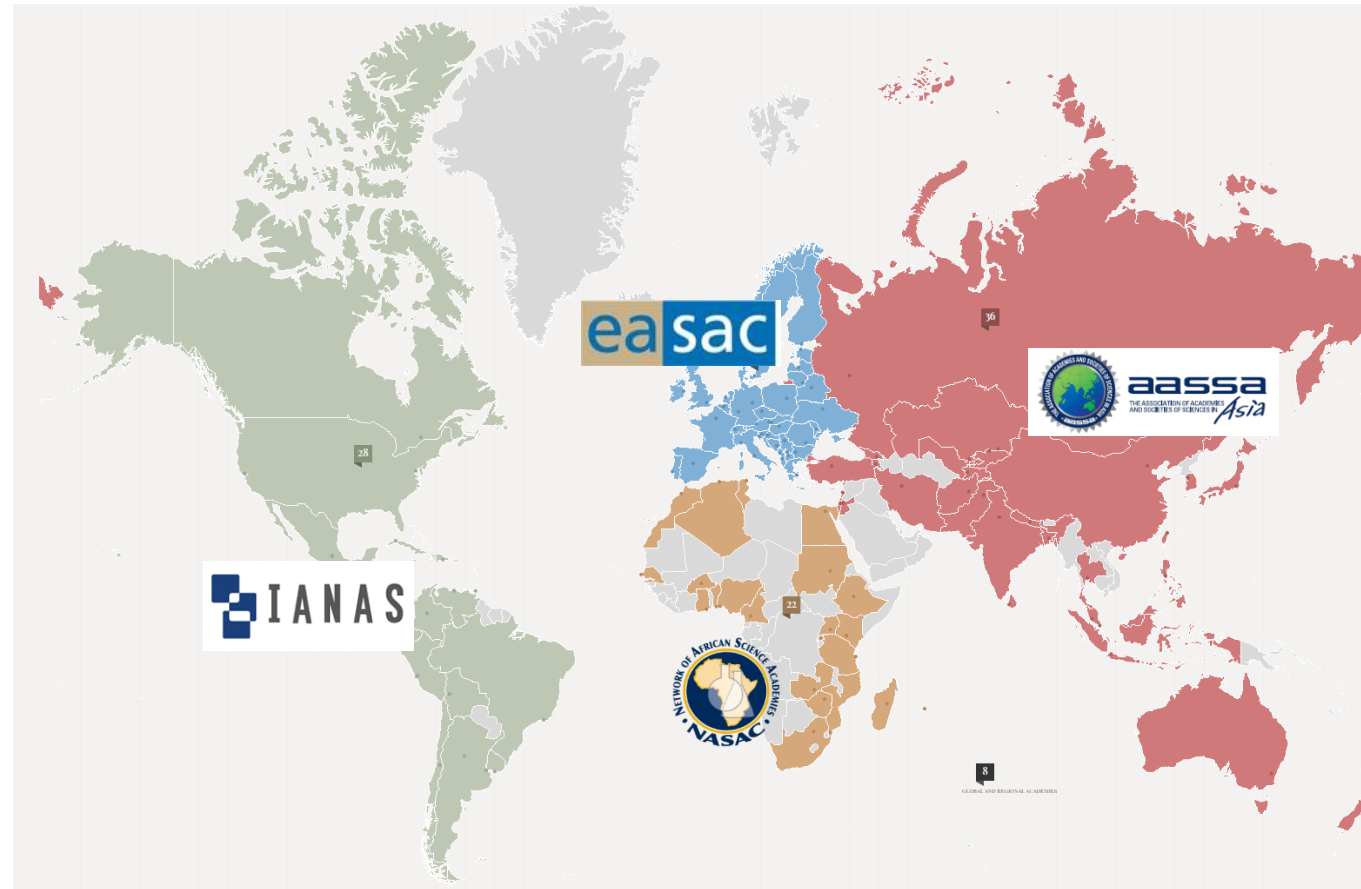
A global synthesis report will highlight regional similarities and differences, and provide advice for decision makers for implementation at global, regional and national levels. Recommendations will take into account local circumstances and strategic needs.

# How does IAP work add value?

- **Science based inclusivity:**
  - Spanning biosciences, medicine, other natural sciences, social sciences
  - Integrating local-regional-global activity on science and innovation
- **Collective academy work worldwide:**
  - Common starting point agreed for regional activities
  - Strong consensus with clarification of controversial issues
  - Recognition and appreciation of diversity
  - Evidence-based messages about opportunities and challenges
  - Learning between regions: sharing evidence, experience and good practices while also involving younger researchers
  - Follow-up at local, regional and global levels with policy makers, scientific community and other stakeholders

# IAP: Membership

More than 140 national, regional and global academies



# Catalysing diverse but coordinated activity.

The IAP starting point - **key questions** for regional academy networks

- What are main effects now of climate change on human health, and what are projected impacts?
- What are the solutions: adaptation and mitigation options?
- What needs to be done to improve evidence base?
- How to ensure focus on vulnerable groups?
- How to link local-regional-global work?
- How to link recommendations with other policy initiatives e.g. for Sustainable Development Goals?

## MOST IMPORTANT SHORT TERM

Renovate 3–5% of buildings per year



New buildings zero emissions from 2020



Best practice in agriculture



Zero deforestation by 2020s



Sustain renewables growth



No new coal power plants



Last fossil fuel car sold before 2035



Develop 1.5°C vision for aviation & shipping



New industrial installations low carbon after 2020



STEPS FOR A  
**1.5°C**  
WORLD

[www.climateactiontracker.org](http://www.climateactiontracker.org)

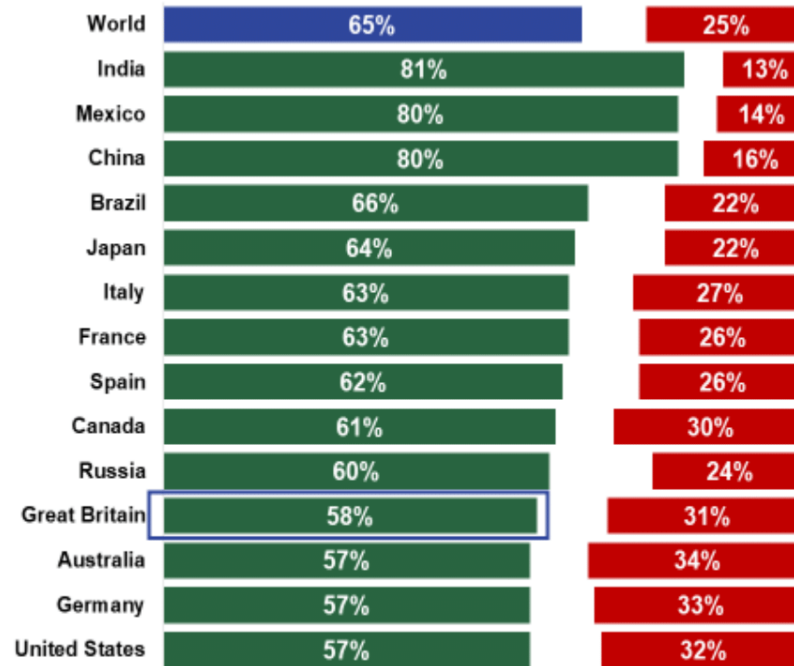
# Support for a 'climate friendly' recovery

## Support for a 'green' economic recovery from Covid-19

### Country data

Q. To what extent do you agree or disagree with the following:

*In the economic recovery after Covid-19, it's important that government actions prioritize climate change*



Base: 28,039 online adults aged 16-74; Fieldwork dates: Friday 17 to Sunday 19 April.

© Ipsos | Earth Day GB 2020 | April 2020 | Version 1 | Public

■ Strongly agree/tend to agree ■ Tend to disagree/strongly disagree

Ipsos MORI Ipsos



# Purpose of this session

- To present evidence from Europe, Asia, the Americas and Africa and seek feedback from audience worldwide to inform project progress
- Using Breakout sessions to stimulate discussion:
  - What issues are emerging from the regional assessments?
  - Considering solutions to the problems identified, what are the options for adaptation and mitigation?
  - What issues require attention at the global level?

Thank you for your attention!

SPONSORED BY THE



Federal Ministry  
of Education  
and Research